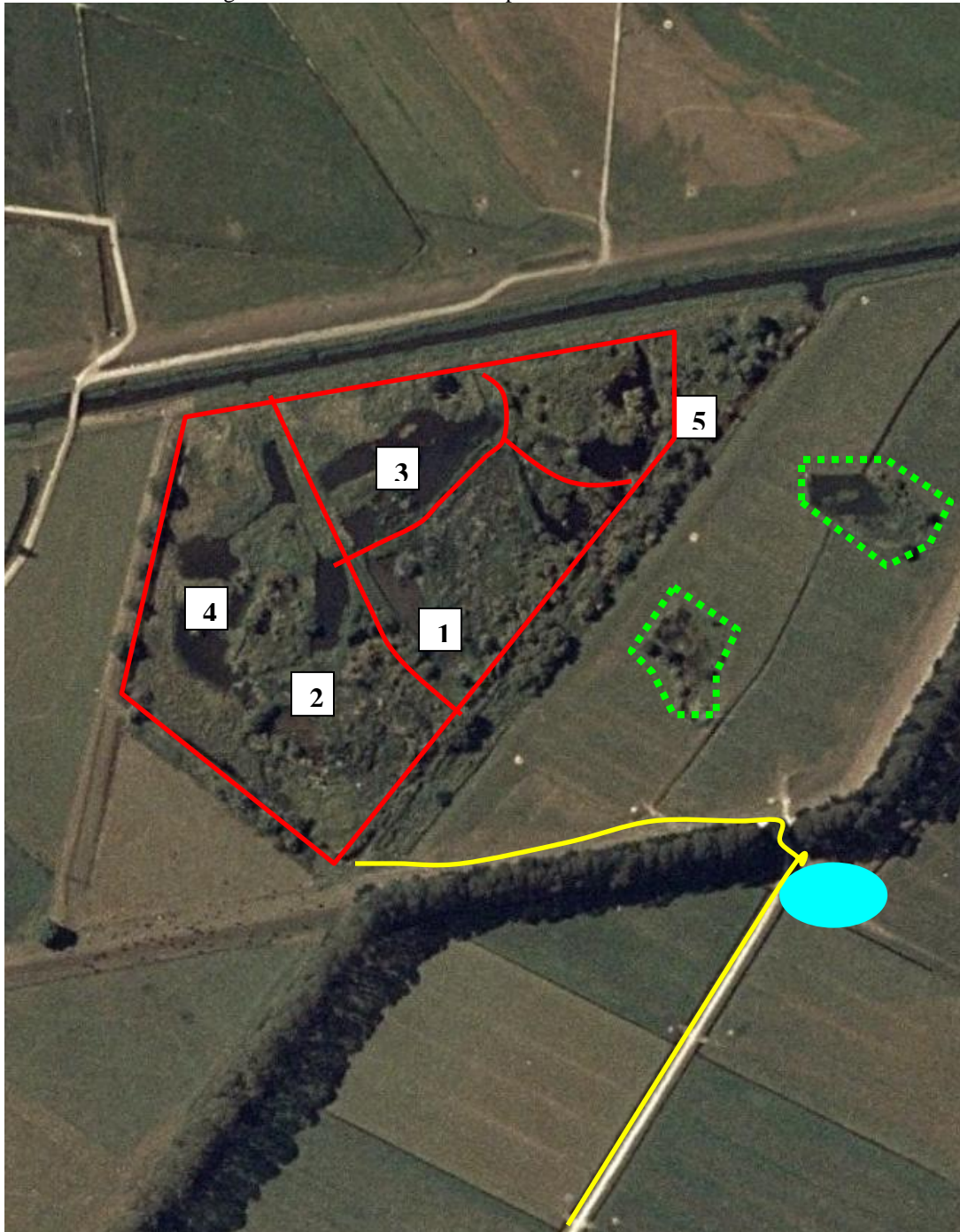




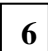




**ORINI WMR** – situated off McLean Road (Western end) which turns off East Bank Road, Edgecumbe. Access is via private farm race where permission for access is compulsory. The access point is the second access driveway on the left (heading West) after crossing over Reids Central Canal. This is a tanker access drive with the cow shed only 50 metres off McLean Road. The race starts between the implement shed and the cow shed and is approximately 1.5km long. Do not speed on this race (ie.<20kph) and wait for stock. At the Northern end of the race (up the hill), turn left and follow track to reserve. Driving around the reserve tracks is prohibited.



-  Vehicle Access Via Van Rossum’s Dairy Farm
-  Internal Reserve Vehicle Tracks (not always vehicle safe)
-  Opening Weekend Vehicle Parking
-  Privately Owned Wetlands = No Hunting
-  Stand / Maimai Number