



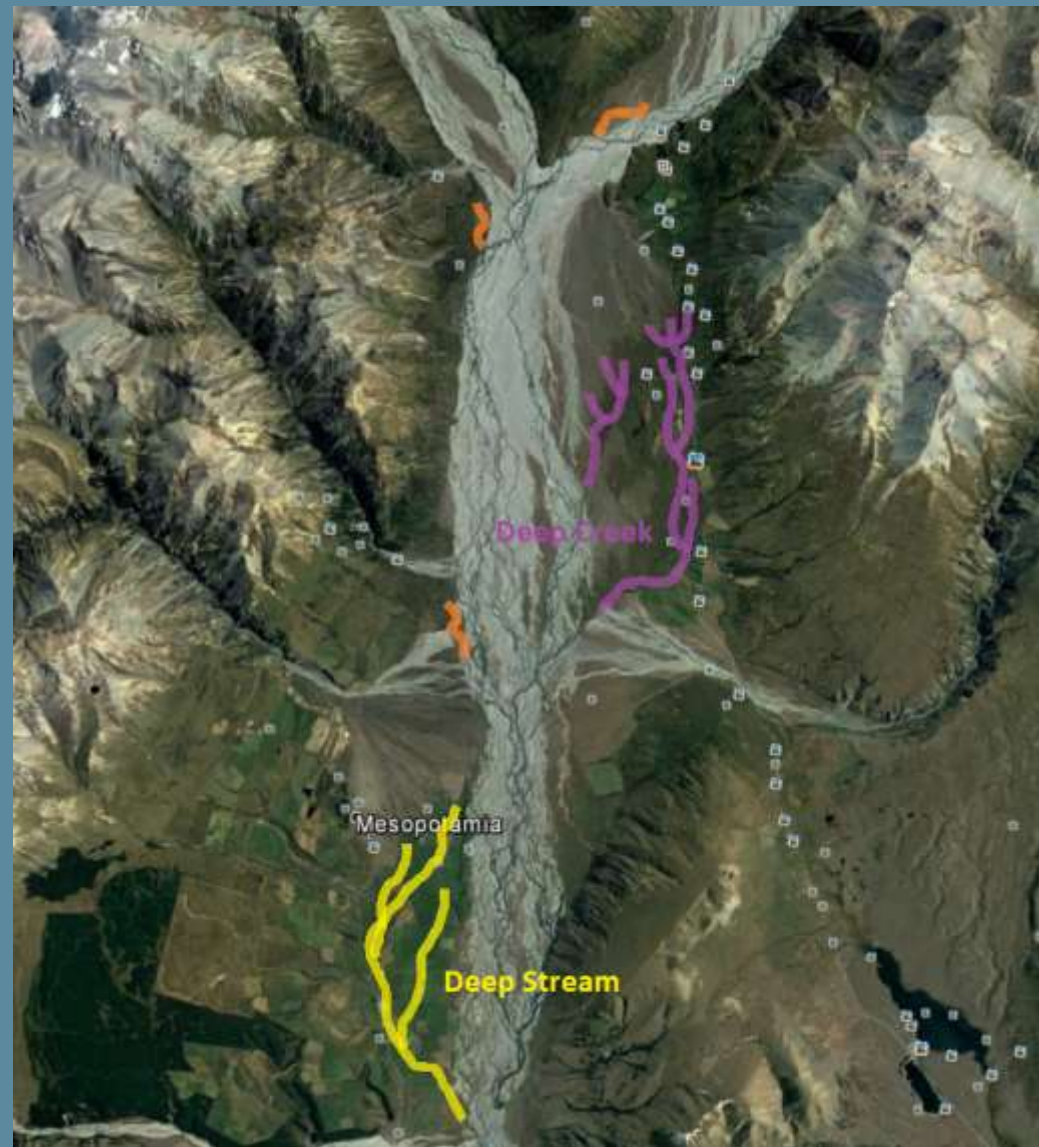
CSI Salmon Spawning Habitat Protection and Enhancement

Hamish Stevens - CSI Fish & Game Officer



Rangitata River

- Two main spawning streams (Deep Creek and Deep Stream)
- Other spawning streams (Ealing Springs, Black Mountain, Erewhon Stream)



Rangitata River Cont....

Deep Creek

- Historical low intensity cattle grazing
- Tenure review protection (2008)
- Stop bank protection (1995 and 2005)
- Little adjacent/upstream development



Rangitata River Cont...

Deep Stream

- Developed intensively farmed
- Tenure review (2008 poor protection)
- Willow removal (11.8km)
- Stock exclusion (14.8km stream fenced)





Fish & Game
NEW ZEALAND







Fish & Game
NEW ZEALAND





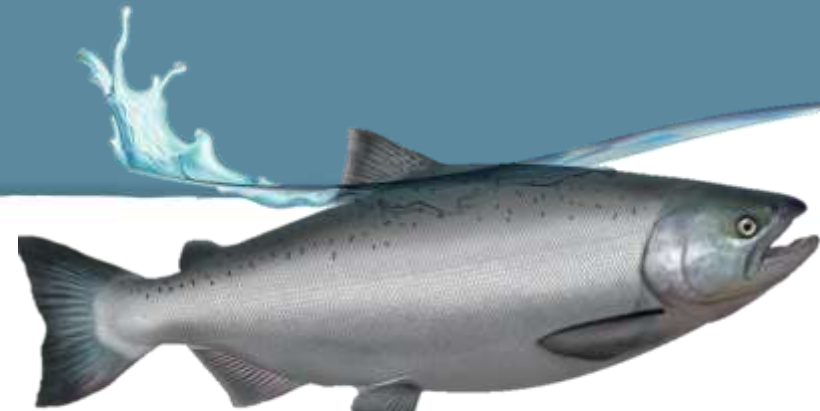




Rangitata River Cont..

Ealing Springs

- Historical upstream stream clearance
- 2014 trial sections failed, silt major problem
- Consents obtained for restoration
- Costs significant (\$190,000)



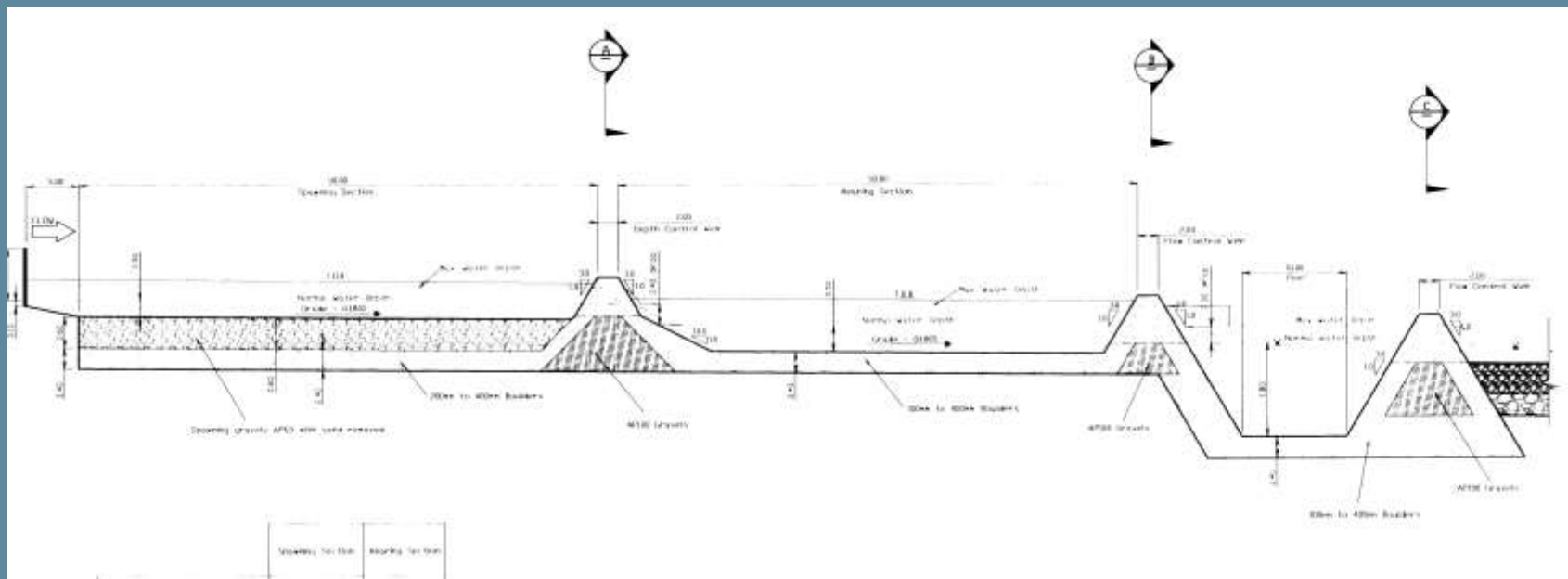




Rangitata River Cont..

Rangitata South Spawning Channel

- 1.6km long
- Costs significant (Lake Alex 300m - \$70,000)





Waitaki River



Hakatamea River

- Salmon passage issue
- Encroachment and land intensification

Waitaki Side Braids

- Willow removal
- Flow manipulation



General Protection For Spawning Habitat

- Regional Land and Water Plan – Schedule 17
- District Council Plans – Jet boat exclusion, vegetation clearance
- National Policy Statements – Stock exclusion
- Tenure Review
- Consent applications

