



**FISH & GAME NZ, SOUTHLAND REGION**

**AGENDA**

**FOR THE COUNCIL MEETING TO BE**

**HELD THE COUNCIL OFFICE**

**17 EYE STREET**

**INVERCARGILL**

**Wednesday 27<sup>th</sup> March 2024**

**COMMENCING AT 6.00 PM**

## **NOTICE OF MEETING:**

The next meeting of the Southland Fish & Game Council will be held on **Wednesday, 27th March 2024** at the Southland Fish and Game Offices, 17 Eye Street, Invercargill, commencing at 6.00pm pm.

### **AGENDA:**

1. Welcome
2. Apologies.
3. Declarations of Interest.  
Register circulated at meeting for Councilors to declare & sign if any conflicts of interest with agenda items.
4. Confirmation of Minutes.
  - Confirm Minutes of the SFGC Public meeting held 1<sup>st</sup> February 2024.
5. Notices of Motion.
  - Receive & accept Health & Safety report to 29 February 2024.
  - Consider Southland's implementation of Organisational Strategy
  - Consider proposed budgetary changes
5. Staff Report.
  - Pressure sensitive fishery interim data
  - Update on Monowai Jetty, Brightwater, Waituna ramp, Mahinga Kai wetland
6. Councilor's Information reports.
  - Southland's Implementation of the Organisational Strategy
  - Gifts, donations, bequests proposal
7. Administration Reports.
  - Accounts paid & Direct Credit/Debit payment list since last meeting.
  - Licence sales progress to 17<sup>th</sup> March 2024.
  - Budget to Actual progress to 29 February 2024.
8. Correspondence
9. NZ Council items & update-Dave Harris.
10. . Items for the next agenda
11. Closure of meeting.

**Unconfirmed Minutes of the Fish & Game NZ, Southland Region Council meeting held at the Southland Fish and Game Offices, 17 Eye Street, Invercargill on 1<sup>st</sup> February 2024, commencing at 6.30pm.**

**Present:**

Lindsay Withington (Chair)	
Dave Harris	Lyndon Norman via Zoom
Mike Hartstonge	Stevie-Rae Blair
David Linklater	Mike Turner

**In attendance:** Zane Moss (Manager)

Steve McCartney (Minutes).

**Members of the Public:** Rebecca Munro

**1 Welcome:**

The Chairman opened the meeting at 6.40pm and welcomed those in attendance.

The Chairman entered a motion to move the meeting to Public Excluded. Moved: D Harris. Seconded D Linklater.

**2 Apologies:**

Craig Horrell and Dave McGregor.

*Moved: M Turner. Seconded: D Linklater. Carried.*

**3 Declarations of Interest:**

The individual member declaration of conflicts of interest with any item on the agenda had been circulated to members before the start of the meeting.  
Any conflicts were noted by the Chairman.

*Moved: L Withington. Seconded: M Hartstonge. Carried.*

**4 Confirmation of Minutes.**

The minutes of the public meeting held 7<sup>th</sup> December 2024 were considered.

*Resolved D Linklater/D Harris: That the minutes of the public meeting held 7<sup>th</sup> December 2023 were taken as read and were a true and correct record, subject to amendment to Game Bird discussion notations. Carried.*

*Moved: L Norman. Seconded: D Harris. Carried*

Councillor Harris advised of negative feedback from the Athol Fishing club in respect of the beat signs. The manager responded by advising that F & G received positive feedback from anglers indicating satisfaction around access information. Staff worked with the club regarding suitable signage in order to satisfy both the club members and associated landowners.

## 5 Notices of Motion

### Health & Safety Report to 31st January 2024.

The Council Health & Safety report for the period was attached to the agenda for consideration. All known hazards were listed in the Southland Health & Safety Plan.

The meeting was advised that the health and safety plan had been reviewed and that the H & S Plan is provided to external contract providers, feedback from whom indicates our plan is robust.

Resolved M Hartstonge/D Linklater: *That the Health and Safety Report to 31st January 2024, be received and accepted.* Carried.

### Notices of Motion

Draft Governance Code of conduct.

Resolved to accept. Moved D Harris. Seconded M Turner. Carried.

Draft Prevention of Bullying and Harassment Policy.

Resolved to accept. Moved M Hartstonge. Seconded D Linklater. Carried.

Draft Drug and Alcohol Policy.

Resolved to accept. Moved D Harris. Seconded D Linklater. Carried.

Draft Drug and Alcohol Procedure

Resolved to accept. Moved D Harris. Seconded D Linklater. Carried.

Organisational Strategy-Consideration of Southland adoption.

(Manager to amend to reflect Southland requirements and objectives and present to next meeting)

Resolved to accept. Moved D Harris. Seconded M Turner. Carried.

## 6. Staff Report

The manager reported that the Black Swan count was good and there will be project work to support Black Swan harvest.

Southland Water and land Plan sediment removal. Work continuing. Zane has a meeting with our lawyer to discuss where to next.

Zane advised that he had been challenged in the media who had criticised F & G re opening of Waituna lagoon – often enough. Zane had responded.

Cr Harris advised of positive feedback in relation to signs on the lower Oreti River. Reflective of the work staff are putting in on the matter.

Wellbeing study. Zane advised Cohen putting in good work on this matter with interviews with anglers and hunters. Consideration being given to a introducing a wellbeing licence, the proceeds from which would go towards supporting at risk youth and others.

## Council's Information reports.

Legal opinion re Good Employer obligations presented re process.

**Administration Reports**

Licence sales slightly behind target LEQ's (82% of target) No other issues raised.

**Resolved to accept. Moved D Harris. Seconded M Hartstonge**

**NZC items.**

No update since last report.

Cr Withington attended a chairs meeting regarding CF bids and the process undertaken. The Minister of Hunting and Fishing has conveyed the expectation that there will be no licence increase.

Cr Harris advised that the SFGC meeting dates will be the last Thursday of each odd month ie January March, May, July, September, and November. Start time to be 6pm.

**Resolved to accept. Moved D Harris. Seconded M Hartstonge**

**Items for next meeting**

Elections

The meeting closed at 8.30 pm.

Chairman \_\_\_\_\_ Date \_\_\_\_\_

# HEALTH AND SAFETY REPORT

## Background

As part of its commitment to Health and Safety and providing a safe workplace the Southland Fish and Game Council requires a report at each meeting describing:

1. Implementation and adherence to the Health and Safety policy/manual – including H&S as an agenda item for staff & ranger meetings.
2. Monitoring and Reporting – in accordance with the Health and Safety plan;
3. Risk Management (identification and treatment) – any new issues or hazards that have arisen and how these have been addressed.
4. Training programme – information sharing and training of staff and volunteers;
5. H&S incidents – near misses or injuries sustained, plus updates on past events;
6. Recommendations.

### **29th February 2024 update:**

#### **1. Implementation and adherence to the Health and Safety Plan**

The Council Health and Safety Plan & Policy was approved at the Council meeting held 9<sup>th</sup> June 2016 and the Plan reviewed annually by staff. The 2023 annual review has been completed. An updated Health & Safety policy was signed by the manager (as per our H&S schedule) and placed in prominent positions in the Invercargill and Te Anau offices.

Our Health & Safety plan has been reviewed in 2023. Staff are currently using the Health & Safety audit checklist (provided by NZ Council) to thoroughly go through all aspects of our H&S plan to insure it remains fit for purpose. Changes will be made to the Health & Safety Plan, hazard register and appendices as appropriate.

We have now produced a Health and Safety Performance Checklist to make sure we are covering everything we need to during H&S meetings. We have also produced a H&S review schedule which documents any changes/additions we make to any elements of our H&S processes. A newly developed H&S action register documents H&S actions which need to take place, who is responsible for the H&S action and when it is to be completed by.

The Health & Safety Policy sets out the commitment that the Council has towards the Health and Safety of all Fish and Game workers and visitors. A copy of the Policy is displayed in the entrance way to the offices in Invercargill and Te Anau for all workers and visitors to see. The Policy is to be reviewed every three years and the last review was 11<sup>th</sup> November 2021, the next review being due in November 2024.

- **Staff meetings include Health and Safety on the Agenda.**
- Staff are given an opportunity to raise any issues and as a team we develop a procedure to minimise the risk. All staff are made aware immediately of any new hazards identified.
- Staff training requirements pertaining to Health & Safety, is ongoing and reviewed annually.
- Tailgate forms are used when staff go out in the Field or Ranging, these are updated as new hazards are identified.
- The boardroom when used for a meeting (visitors to the site)- all persons attending the meeting will be given a verbal Health and Safety briefing by the Chairman – i.e. shown where all exits are in case of emergency and notified of any hazards in the area.



## Monitoring and Reporting

Work Place Accident Register  
as at 29th February 2024

Number of workplace injuries in 2023-2024 year	1
Number of workplace injuries in 2022-2023 year	0
Number of workplace injuries in 2021-2022 year	1

## 2. Risk Management (identification and treatment)

Health & Safety meetings with staff are held on a regular basis with minutes of the meetings taken.

Staff continue to supply the Office with work intention forms before any activities were undertaken with start and finish times and search times recorded.

Tailgate forms are signed off by workers prior to commencing activities to identify risks and hazards so that all members were aware of the hazards and the controls in place to minimise any risk. Tailgate forms were always being reviewed and necessary updates made.

Staff & Contractors are reminded to report any near misses and minor/major incidents and to update tailgate forms when any additional significant hazards were identified.

Contractors to Fish & Game are required to sign our H&S Plan & H&S induction checklist.

A vehicle safety check list has been developed to be filled out by staff during bi-monthly H&S meetings so any safety issues with vehicles are identified.

Additionally, a new safety interaction form has been developed to keep H&S in the forefront of the staff 's mind when conducting their work.

## 3. Training programme

A staff training schedule was ongoing to ensure all hazards that required specific training were identified.

## 4. H&S Incidents

Member of the public used a partially assembled access stile (in the garage) which collapsed. No injury, but potential for an injury event. 'Staff Only' access sign to be placed on entry doors.

## 5. Recommendations

Council receive and accept this Health & Safety report.

## 4.1 Unified & enduring organisation

### OBJECTIVE

A national and regionally cohesive organisation built on a culture of shared values, trust and engagement. Delivering on vision and purpose for stakeholders and Mana Whenua. Maintaining the statutory mandates that enable effective service delivery.

### THIS MEANS WE WILL..

Increase cross-regional and national engagement within Fish & Game

- The Southland Council will develop projects to support engagement with other regions, particularly those regions where Southland licence holders fish & hunt
- The Southland Council will ensure staff contribute expertise to the broader organisation
- Implement a governance structure of both elected and appointed members
- The Southland Council will reduce the number of elected councilors for the 2024 and look to subsequently coopt additional members based on requisite skills and representation
- Design and implement a comprehensive communications plan connecting across Fish & Game, licence-holders and wider stakeholders
- The Southland Council will engage with the NZC comms team and support comms initiatives

- Adopt a full suite of binding governance and corporate policies including roles and responsibilities and resource allocation
- The Southland Council will advocate for a transparent and equitable allocation of resources across the organisation, supporting the review recognition that the regional presence is the lynchpin of Fish and Game's effectiveness
- Establish a programme of professional development for elected members and Fish & Game staff
- The Southland Council will undertake governance training at least once annually
- Develop Fish & Game culture through recognition, ownership and collective accountability to shared values.
- The Southland Council will support staff attending an annual meeting of South Island regions
- Support additional operational meetings, particularly with CSI & Otago
- Develop a project to support fisheries work associated with the Canterbury canals, recognising that it is the 6<sup>th</sup> most popular fishery for Southland licence holders (ahead of Lake's Manapouri, Monowai & Mavora (for example)).



## 4.2 Attract & retain licence-holders

### OBJECTIVE

Deliver a valued and cost-effective experience for licence holders by understanding their needs, providing simple processes and effective communication. This will ensure sustainable revenue to support delivery of Fish & Game programmes, making freshwater fishing and game bird hunting more attractive to a wider group of future participants

### THIS MEANS WE WILL...

- Review the existing R3 programme (Recruit, Retain, Re-activate) for effectiveness to-date
  - **The Southland Council will promote unified and simplified regulations**
  - **Support upskilling of anglers**
  - **Support initiatives to increase female participation**
  - **Support uptake of freshwater fishing by immigrant communities**

Review the licensing and pricing model to maximise user value and provide sustainable revenue for Fish & Game operations

- Conduct attitudinal and usage research with licence-holders to identify needs, wants and perceived value
  - **The Southland Council will promote nationally consistent Hunter satisfaction surveys**
- Conduct social research with wider public to determine perceptions, barriers and enablers to participation
- Provide database analytics on member churn and reactivation rates and associated demographics
- Develop and implement a data-driven national marketing programme
- Seek alternative sources of income to support Fish & Game programmes
  - **The Southland Council will look to address barriers to bequests and donations**
- Provide access to sustainable wild harvest opportunities for current and future generations of hunters and anglers.
  - **The Southland Council will continue to improve online access maps and imagery**
  - **Support development of an access App**

## 4.3 Mana Whenua connected

### OBJECTIVE

Māori values are understood and reflected within Fish & Game, with aligned advocacy and a positive collaborative approach that builds upon our responsibility to give effect to the principles of Te Tiriti set out in the Conservation Act 1987.

#### THIS MEANS WE WILL...

- Identify and recognise existing Treaty Settlements and their implications for Fish & Game's work
- **Ensure staff are understand Ngai Tahu's Treaty Settlement & its implication for our work**
- ~~Recognise the variation in experiences, expectations and capacity between whānau, marae, hapū, and settled and unsettled iwi~~
- ~~Co-develop guidelines for Mana Whenua input to Fish & Game management plans~~
- ~~Co-develop a Kawenata (charter / policy) on Mana Whenua relationships and conflict resolution~~
- Deliver leadership and staff cultural education on Tikanga and Fish & Game obligations to Mana Whenua
- Identify and reconcile historic grievances between Mana Whenua and Fish & Game at a regional level
- **Initiate conversations through Runaka to identify and understand grievances**
- Actively collaborate on projects with Mana Whenua on areas of common interest.
- **Work with runaka to develop opportunity to introduce koura through our habitat work, that may subsequently provide mahinga kai.**
- **Work with runaka to identify seasonality and population dynamics to support harvest of black swan as mahinga kai.**
- **Work with Maori health providers to facilitate freshwater fishing to support mental health**



## 4.4 Public perception & legitimacy

### OBJECTIVE

Understanding and re-shaping public perception of Fish & Game New Zealand, angling and game bird hunting through positive messaging of natural environment protection, wild food harvesting, and well-being through outdoor recreation.

### THIS MEANS WE WILL...

- Conduct social research with NZ public to gain baseline data on perception and attitudes to Fish & Game, angling and game bird hunting
- The Southland Council will continue to lead the research project on the mental health benefits of freshwater fishing
- Develop a pilot program working with those supporting at risk youth to enable fishing as an activity
- Work on the development of a Wellbeing Licence
- Support recognition that prescription of trout fishing is a recognised and legitimate Mental Health intervention
- Pilot program considering developing 'Fishing for Farmers'
  - Conduct economic research to quantify the total value of angling and game bird hunting in New Zealand
  - Design and deliver a targeted multi-level campaign to inform public perception, encourage participation and influence policy
- Visibly engage in regional public good projects aligned with Fish & Game strategy and objectives, such as catchment groups, and wetland management
- Lead work looking at nutrient attenuation in on-farm wetlands

## 4.5 Healthyspecies, habitats, & ecosystems

### OBJECTIVE

Sport fish and game bird species are monitored and sustainably managed, freshwater habitats are healthy, and access to wild harvest opportunities are secured for current and future generations.

### THIS MEANS WE WILL...

- Deliver species monitoring, applying fisheries and game bird management standard operating procedures
- Southland will undertake species monitoring for fisheries and game birds that delivers robust and scientifically defensible information.
- Maintain fishing and hunting regulations and provide seasonal notices for anglers and hunters
- Southland will continue to ensure our fishing and hunting regulations provide for maximum sustainable opportunity, and are as simple as possible, to ensure they are not a barrier to our regional R3 goals.
- Advocate for the protection and enhancement of freshwater fish and game bird habitats
- Southland will continue to advocate for the protection and enhancement of freshwater fish and game bird habitat.
- Understand and manage the relationship between indigenous and valued introduced freshwater fish and gamebird populations
- Southland will look to further understand the relationship between indigenous and valued introduced species that we advocate for, and manage accordingly.
- Understand the impacts of climate change on habitats and species and mitigate through long term action plans
- Advocate for the maintenance and protection of outstanding water bodies through water conservation orders
- Protect and enhance access to freshwater environments and wild harvest opportunities
- Southland will continue to prioritise maintenance and enhancement of access to freshwater environments.
- Undertake compliance activities.
- Southland will continue to recognise the importance of Compliance in our role.



## **Explanatory notes for budget.**

You will have previously seen the letter from the New Zealand Council to regions, requesting that we consider reducing our budgets by 3%. The letter also identified the Hunt Resource Allocation Report, that proposes that resources are reallocated based on proportion of use in regions. It clearly identifies that the West Coast, the two Canterbury regions, Otago and Southland receive far less resourcing per unit of use than other regions. On that basis, whilst Southland endeavors to save funds from our budget to increase the contestable funding pool, we should expect that we are successful through the contestable funding process, for key projects.

I have been able to find some savings within our expenditure, although it hasn't been easy. I've also identified, based on partial year to date, costs that will require an increase of \$8964 (for fuel, insurance, rates and safety equipment).

To achieve the requested magnitude of savings, I've suggested we also cancel the Paradise Shelduck monitoring. However, I have then applied for funding out of the conditional funding pool. I have also applied for \$10,562 to meet the market with respect to movement of staff salaries.

### Te Anau House

We've had the Te Anau house assessed by a builder who found that the roof is in need of replacement. The wooden windows, which are covered in lead-based paint also require significant work to repaint them and it suggested that it would be more appropriate to reglaze those windows. The fire is also not up to standard and requires replacement.

It's worth noting that our tenants are moving out, because of concerns the house currently will be too cold to live in through the winter. My suggestion is the investment we make in upgrading the roof and the windows will quickly be offset by the house remaining tenanted through the winter.

We have specific dedicated reserves from the sale of a previous property in Te Anau that can be used for this work, which means this cost doesn't add to the licence costs.

## **Budget notes**

### Fuel

Actual fuel cost increases within current financial, 6mths spend \$13000, budget only \$17000, need to increase to \$20000. \$3000

### Insurance

Actual costs within current financial year \$28490. Budgeted \$25900, need to budget \$30000. \$4000

Rates

Actual \$500

### Te Anau House

Leaking roof, replace roof	\$30000
Replace non-compliant fire	\$5000
Replacing windows	\$26000

Increased costs-based on this year's expenditure

Fuel	\$ 3670
Insurance	\$ 4094
Rates	\$ 500
Safety gear allowance	\$ 700
	<b>\$ 8964</b>
Requested savings by NZC	\$ 24718

Proposed savings from budget

Equipment maintenace MSA	\$ 500
Equipment maintenace	\$ 2000
Mowing Te Anau etc	\$ 7500
Native non-native	\$ 500
Mileage	\$ 1000
Estuarine Health Study	\$ 60
Talks to interest groups	\$ 105
	<b>\$11665</b>
Addional budget savings to reduce REM	<b>\$10562</b>
Cancel Paradise Shelduck monitoring	<b>\$9000</b>
Total savings	<b>\$31227</b>
<b>Additional costs (fuel, insurance etc)</b>	<b>\$8964</b>
	<b>Savings \$22263</b>
CF Bid to meet REM	<b>\$10427</b>
Paradise Shelduck	<b>\$ 9000</b>
<b>House maintenance Te Anau reroof, windows, fire etc (one off from reserves)</b>	<b>\$61000</b>

## Southland Fish & Game Staff report – February-March

### **1100 Species Management Projects:**

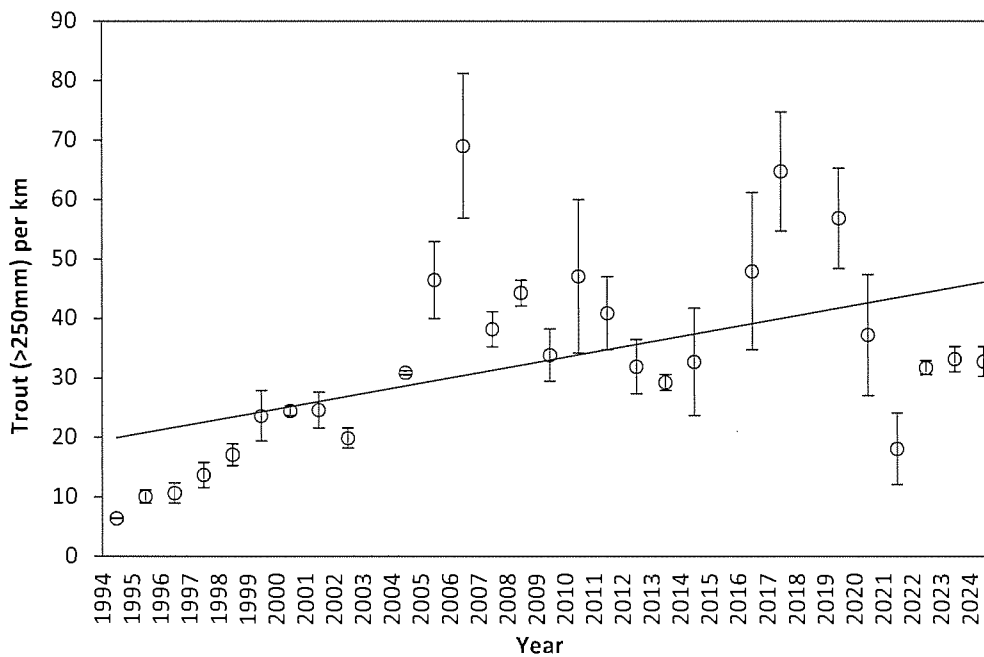
#### **1111 Trout and salmon spawning surveys**

Staff have compiled all historical records of brown trout spawning and juvenile trout (from electric fishing data), along with their respective locations. This information will contribute to the creation of a trout spawning habitat model. This model will be used to predict and map trout spawning habitat across Southland.

#### **1112 Fisheries monitoring (drift diving, electric fishing)**

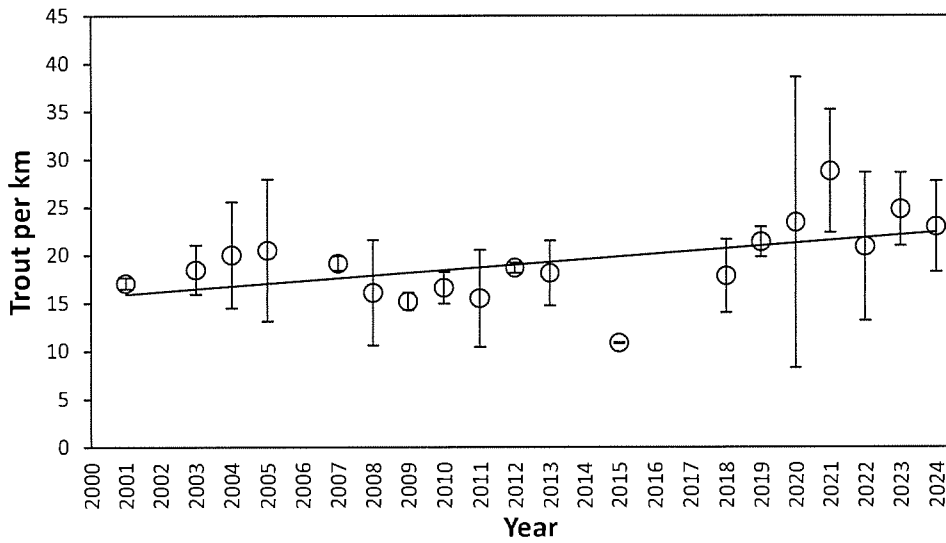
Staff completed a drift dive survey on the upper Mataura River approximately 2km either side of the Garston Bridge. On average, 33 trout we observed per km and the majority of trout we observed were in excellent condition.

#### Upper Mataura River



#### Upper Oreti River

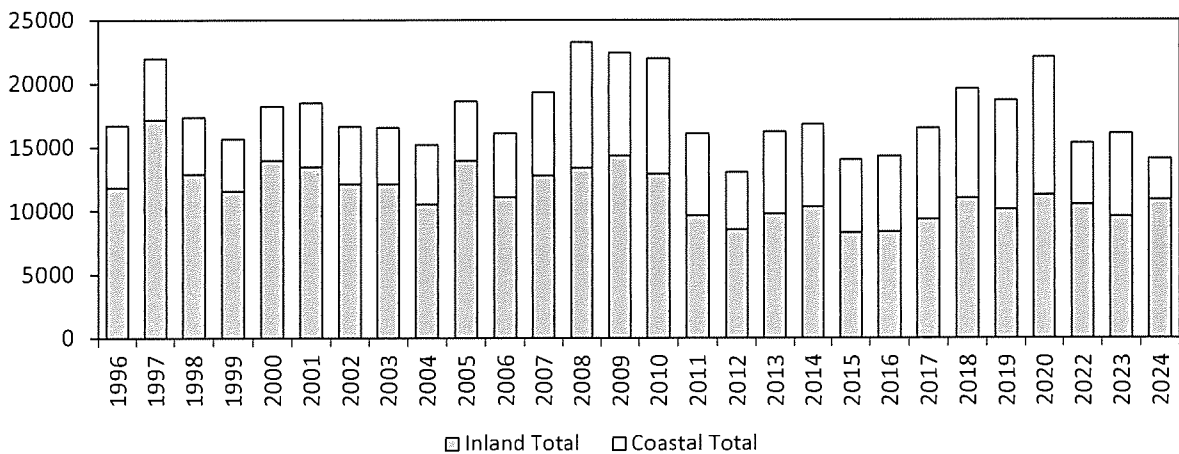
Staff completed a drift dive survey on the upper Oreti River approximately 3km either side of the of Three Kings. On average, 23 trout we observed per km and the majority of trout we observed were in excellent condition.



#### 1116 Paradise shelduck and black swan counts

Staff completed the annual paradise shelduck moult counts. In total, 14,100 were counted; 3252 were counted at costal sites and 10,858 were counted at inland sites.

**Paradise Shelduck Moults 1996-2024**



#### 1161 Put and take fisheries

2000 0+ rainbow trout from Otago F&G were released to Lake Thomas (1700) and McGregor Pond (300).

The annual donation of chinook smolt from Sanford, reared on and destined for McGregor Pond, has been delayed this season until late March. We normally receive them in December.



## ***1200 Habitat Protection/ Management***

### **1211 RMA - Plan, policy, pSWALP**

#### Proposed Southland Water and Land Plan

Discussions have occurred between Fish & Game, Forest & Bird and Environment Southland in relation to High Court appeals on Rule 78, including the rule framework and criteria.

Southland Fish & Game and Forest & Bird are jointly appealing to the High Court after the Environment Court's decision on Rule 78 of the Proposed Southland Water and Land Plan. Rule 78 creates a permitted activity for weed and sediment, including from modified natural waterways throughout Southland, mainly to manage land drainage. Expert evidence presented in the Environment Court is clear that:

1. Weed and sediment removal, including removal of instream gravel, is a destructive activity;
2. Rule 78 allows for high levels of disturbance to waterways – the current mitigation proposed in the rule is insufficient; and
3. The most effective method of minimising the effects of weed and sediment removal is to reduce the frequency and extent of the activity.

Environment Southland has expressed a willingness to work with key stakeholders, including Southland Fish & Game and Forest & Bird, to address the adverse effects of the weed and sediment removal activity. This includes establishing a working group to advance development of a rule structure to be notified through Plan Change Tuatahi – likely in late 2024 / early 2025. In reply, Southland Fish & Game and Forest & Bird, have decided to put their joint appeal with a view to actively engaging with the working group. A work programme is currently being developed for the working group. This is likely to involve several workshops and ongoing meetings to revise / amend the rule framework, including review of Environment Southland's Code of Practice applicable to weed and sediment removal.

#### Plan Change Tuatahi

Fish & Game staff have remained in contact with Environment Southland staff regarding Plan Change Tuatahi. Plan Change Tuatahi is intended to set limits, targets and methods (for discharges to and abstractions from waterways) that will help achieve hauora, a state of healthy resilience, for waterbodies within a generation. Indications are that Environment Southland intends to proceed with its original timetable to notify Plan Change Tuatahi in early 2024, notwithstanding Government proposals to grant a 3-year extension, until 31 December 2027, for regional councils to notify their freshwater plan changes.

#### Gore Biodiversity Technical Working Group

Fish & Game staff participated in a workshop convened by Gore District Council with respect to identification of significant natural areas (SNA's) in the Gore District.

## 1212 RMA - Consents evaluation

Instream works	Discharges	Gravel / Rock
<p>Catchment Management Division (Environment Southland) – Application for retrospective consent for river works undertaken in mid-Aparima River using emergency powers under s 330 of the RMA.</p>	<p>Southland District Council – Written submission on publicly notified application to discharge treated wastewater from Edendale and Wyndham townships into the lower Mataura River</p>	<p>Liaison / discussion has occurred with several contractors and their consultants in relation to potential gravel extractions from the mid-Oreti and Aparima Rivers for commercial supply.</p>
<p>Brunel Peaks Station – Application for renewal of consent to undertake river works in the beds of tributaries of the lower Waiau River to maintain stock crossings and address erosion.</p>	<p>Southland District Council – Written submission on publicly notified application to discharge treated wastewater from Balfour township into Longridge Stream</p>	
<p>Catchment Management Division (Environment Southland) – Application for consent for river works in upper Oreti River to address erosion of infrastructure (Gallagher Road)</p>		

### Waimea Stream willow & gravel removal

Staff followed up on complaints received regarding removal of gravel and willows that was undertaken on the Waimea Stream. You will see a letter written in response to Environment Southland's chief executive in the correspondence.

### 1232 Pond/wetland identification and advice

Staff surveyed one potential wetland site on the outskirts of Invercargill. The landowner is still exploring its feasibility.

Update on 2023 GBHT grants.

1. Grimm's wetland has been completed and is currently filling. See Before & After photo's below.
2. Harakeke Wetland has been started & the owner is completing it himself between other works.
3. Elder's wetland has had the willow removed and is awaiting drier conditions, which maybe next summer now.
4. Wainui Wetland has been put off until next summer.

Grimms Wetland Before



Grimms Wetland After



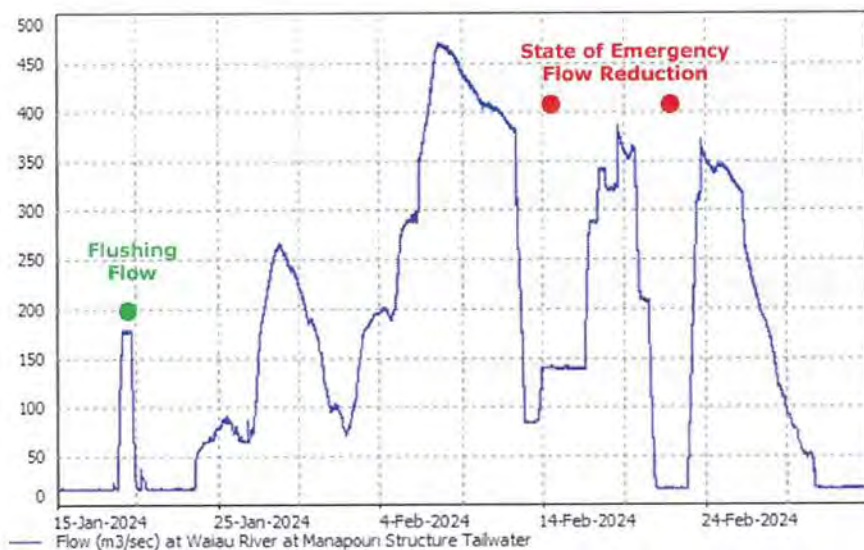
### **Waituna mahinga kai wetlands**

Staff have initiated construction of the (likely) last mahinga kai wetland development. This have involved mulching the gorse as a starting point, prior to our usual dozing and digger work.

### **1241 Waiau River hydro power effects (periphyton, WWP)**

Staff completed the sixth lower Waiau periphyton survey of the season on March 12. The river continued its 'Green' status from the previous survey on February 21. The January 9 survey had the river as 'Red' for the first and only time this survey season. As a result, on January 17, a flushing flow that reached approximately 170 cumecs was released from MLC.

Periods of mandatory high lake level spill of up to 460 cumecs followed. This was interspersed with periods of reduced flows intended to assist the Waiau mouth gravel bar opening being undertaken under a State of Emergency.



### **1300 Participation**

**1311 Maintain, protect and enhance access.**

Staff followed up complaints from anglers and hunters regarding the Ladies Mile (pump shed) access to the Upukerora River having a gate locked.

Investigation revealed that the water scheme contractor to SDC was responsible. SDC was spoken to, with the clear message that this action in blocking access over marginal strip was not legal.

Staff have continued advancing the Brightwater project with the Gordan's and QEII.



Bill Gordan discussing options on the Brightwater project. The Gordan's have been extremely generous with angler access to this treasured fishery for decades.



### **1313 Monowai jetty proposal**

Staff have continued to progress this project and are aiming for construction next summer.

Materials have been ordered from EH Ball. Te Anau Earthworks have quoted for the pile driving and a local builder is currently pricing up the construction costs.

Staff are preparing funding applications.

### **1314 Pressure sensitive fisheries**

Staff have continued with the pressure sensitive fisheries work program. Staff have been undertaking bankside surveys to assess angler displacement and opinions on the upper Oreti, upper Maitai, Aparima River, Hamilton Burn and Waikaiti River. To date, over 200 bankside surveys have been completed. Staff have also reviewed trail camera monitoring data. A summary of the results will be presented at the meeting.

### **1332 Promote fish/hunt magazine, internet & print**

Staff have produced content for the e-zine Reel Life. Content has focused on upskilling anglers and providing relevant tips, advice, and general information.

### **1334 R3 - recruitment, retention, reactivation**

#### Wellbeing study

In early March the Fish & Game angler wellbeing and mental health survey was released. A significant amount of time has been dedicated to preparing for the launch of this study. The survey was well received by a vast majority of anglers with over 1200 anglers completing the survey to date.

Staff have almost completed the edits for our qualitative (interview-based) wellbeing study that was submitted to the journal *Kōtuitui: New Zealand Journal of Social Sciences Online*. We will look to resubmit our manuscript in the next few weeks.

## ***1400 Communication***

### **1423 Communication with farmers**

The manager was coerced into writing an Opinion editorial for Farmers Weekly regarding gravel management and management of rivers in response to ongoing complaints from local Federated Farmers. He was also interviewed for the Farmers Weekly podcast, on the same topics.

### **1426 Communication with anglers and hunters**

Staff have received and replied to various email, Facebook and phone queries from anglers.

### **1427 Communication with other F&G regions**

Southland staff have worked with other regional F&G staff where appropriate. On new area where regional staff are collaborating is in the preparation of documents and plans for the potential arrival of avian influenza to New Zealand.

### **1428 Fish & Game web site maintenance**

Staff have developed the Southland sections of both the fishing and game side pages, as well as contributed to the national pages. There has been a focus on providing more information on public land hunting opportunities, closed game areas, as well as the legal requirements for maimai on public land.

## ***1500 Compliance and enforcement***

### **1511 River angling ranging duties**

Staff have maintained a strong presence on rivers across the region. Angler licence checks have been conducted on the following fisheries: the Mataura (upper and mid-reaches) Oreti (throughout the catchment), Wakaia and Waiau Rivers.

To date, the following angling offences during the 2023 / 2024 fishing season:

1. 21 x fishing without a standard licence offence, including 6 x non-resident anglers;
2. 4 x fishing without a designated waters day licence (non-resident anglers); and
3. 1 x obstruction.

### **1512 Lake angling ranging duties**

Shore based lake ranging has been conducted on Lake Te Anau, Lake Gunn and Mavora Lakes.

### **1513 Game Season Ranging**

Liaison with NZ Police ahead of the 2024 Game Opening has begun, with a commitment of three officers to accompany Fish and Game staff.

### **1533 Fiordland compliance & CCD**

Staff have undertaken angler compliance checks (licence, controlled period licence and clean gear certificate) on the Clinton River.

Staff have maintained CCD cleaning stations throughout the Fiordland area.

## Donations, Legacies & Collaborative Projects – Website wording

---

*Fish & Game manages, maintains and enhances sports fish and game birds, and their habitats, in the best long-term interests of present and future generations of anglers and hunters. We are a not-for-profit organisation, funded through the sale of fishing and hunting licences.*

Southland Fish & Game have projects and ideas that are not feasible with our current level of funding.

These are not the *must haves* which maintain the status quo. These are the *nice to haves* - the valued-added endeavours which would truly benefit and enhance the habitats of our treasured sportfish and gamebirds, and the angling and hunting experience.

It's currently Catch-22 – we're unable to consider projects without funding but neither can raise funds without the projects.

Anglers and hunters share our values and ethos, and so some might like to partner with us by providing the resourcing to enable specific projects.

This could be made through a donation, a legacy or a unique collaborative arrangement. Legacies can be made in your will, conferring certain asset(s) to the Southland Fish & Game Council.

A project that has meaningful outcomes to both the donor and Fish & Game will be settled upon, and staff will report back to the donor/surviving family members with measurable results.

The following project areas may offer some guidance or ideas.

*Access* – new or improved access points, negotiating public access, long-term protection (eg. QEII Covenants) or the outright purchasing of high value pieces of land for public benefit.

*Youth* – recruitment, training & education of young people.

*Weed Control* – encroachment of gorse, broom or dense willows on the margins of rivers &/or wetlands.

*Planting* – enhancing native vegetation on our waterways and wetlands. Riparian strips.

*Wetland Construction &/or Improvement* – these provide huge benefits as habitat and improve the downstream water quality by capturing sediment and nutrients (nitrogen and phosphorus).

*Catchment or fishery specific* – Donations can be pegged to a particular catchment/fishery.

*Research* – Fish & Game has a long history of commissioning and participating in research that underpins our decision making.

*Legal/RMA challenges* – Fish & Game have a very capable team focused on RMA work, however external lawyers or specialists are often required.

Should the doner not wish to earmark it specifically or attach conditions, then it will be allocated through the considered opinion of staff or voted on by the elected councillors (for larger amounts).

Southland staff would welcome the opportunity to discuss and collaborate on localised projects. Donations of all levels will be gratefully considered.

To discuss it further, please contact Southland Field Officer Ben Febery at [bfebery@fishandgame.org.nz](mailto:bfebery@fishandgame.org.nz) or on 03 215 9117

Alternatively, donations to the work of Fish & Game nationally can be made here - <https://donations.fishandgame.org.nz/>





## Steve McCartney

---

**From:** Ben Febery <bfebery@fishandgame.org.nz>  
**Sent:** Wednesday, 6 March 2024 10:53 AM  
**To:** Steve McCartney  
**Subject:** Fw: lawn fishing

Hi Steve,

Can you please add this to the correspondence for the next council meeting.

Thanks,  
Ben

---

**From:** Megan Frampton <mframpton@goredc.govt.nz>  
**Sent:** Wednesday, March 6, 2024 10:20 AM  
**To:** Ben Febery <bfebery@fishandgame.org.nz>  
**Subject:** RE: lawn fishing

Hi Ben

Thank you so much for that! That's a lovely photo.

I'm not sure if Jess has already been in touch but we wanted to say a massive thank you for what you and your team bought along to the On the Fly. The fish trailer was an absolute crowd-pleaser (and luckily, my son didn't decide to get in it!)

Also, the casting game that you were able to get set up was a fantastic activity. It was a really inviting activity for children to simply have a go at casting. My daughter really enjoyed it and has never used a fishing rod before, but she really loved it. It would be a really wonderful activity to possibly have running for longer next time if staffing it is possible, but we have plenty of time before we start organising the next one!

Thank you again!

Megan

---

**Megan Frampton** | Events Assistant  
**T:** 03 209 0330 | **DDI:** 03 748 0565 | **M:** 021 764 129  
**E:** mframpton@goredc.govt.nz | **W:** www.goredc.govt.nz  
Gore District Council, 29 Bowler Avenue, PO Box 8, Gore, 9740

**GO RURAL**  
GOVERNMENT COMMUNITY  
**RE CITY**  
**LIVING**



**Antenno**  
Be informed. Get involved.

**Disclaimer**

The information contained in this communication from Gore District Council is confidential. It is intended solely for use by the recipient and others authorized to receive it. If you are not the recipient, you are hereby notified that any disclosure, copying, distribution or taking action in relation of the contents of this information is strictly prohibited and may be unlawful.

**From:** Ben Febery <bfebery@fishandgame.org.nz>

**Sent:** Monday, March 4, 2024 8:58 AM

**To:** Megan Frampton <mframpton@goredc.govt.nz>

**Subject:** Fw: lawn fishing

Hi Megan,

My colleague who was taking photos at On the Fly snapped this one of your family and I thought you might like it.

Trust you're enjoying a quieter period after Field Days & On the Fly.

Cheers,

Ben

## Steve McCartney

---

**From:** Cohen Stewart  
**Sent:** Tuesday, 12 March 2024 10:12 AM  
**To:** Zane Moss; Ben Febery; Dwight Grieve; Bill Jarvie  
**Cc:** Steve McCartney  
**Subject:** FW: Some follow on thoughts on Designated Waters this year

FYI, some thoughtful correspondence from a NR angler.

Steve, will be one for correspondence.

---

**From:** Anthony Ling <awmling@gmail.com>  
**Sent:** Tuesday, March 12, 2024 9:59 AM  
**To:** Cohen Stewart <cohen.stewart@southlandfishgame.co.nz>  
**Subject:** Some follow on thoughts on Designated Waters this year

Hi there Cohen

I hope this finds you well.

We touched base on the subject a year or so ago, and I just wanted to give you a little feedback and my perspective as a visiting angler.

First up I think it has worked well in general, but the law of unintended consequences has been that visiting anglers have moved from Designated Waters to Non Designated so the pressure has simply shifted onto other waters. I think that to be fully effective then pretty much all major rivers and their tributaries need to be included. In early Feb I spent a day on the Trent where the anglers tracks down the bank resembled a highway. A few days later I ran into a group of German anglers on the Wangapeka, quite a way further north. They were talking about what a great time they had down on the Trent, with two groups armed with walkie-talkies working the river together! Now they were at it again!! This is by no means an isolated example.

It is still the case that the actual cost of a day fishing on a Designated Water for a visiting angler is simply a fraction of the cost of their trip overall. It is so small as to be almost meaningless. I think it could, and should be more. It is simply not possible in this day and age to have free, world class fishing. The fishing can be world class or it can be free but not both. This is not to say that Kiwis should pay more, I dont think they should, I think that visiting anglers should pay even more than the price charged this year, and that the rivers included should be dramatically expanded so that the pressure doesn't simply move down the chain.

I actually was license checked for the first time on the Upper Hope, which was a good thing. One of the questions that the ranger asked in his questionnaire was whether I thought five days in a region was too short. I really hope you don't extend the time as it will be counter productive. The only folks it is too short for, are those who want to abuse the system in my opinion! five days is just fine!

There were still a lot of anglers about. We had been on Hurunui Sth branch and had to pull out due to angling pressure. A well respected helicopter pilot told us not to go to north branch as a new outfit was dropping party after party in there every day (and we saw this ourselves) and even on the Upper Hope we had just settled into our hut for the evening when a visiting French angler arrived. He had

walked in from the road as he hadn't seen any cars but didn't know we were there and we had to disappoint him to tell him that we had come further south than intended because we had seen an angler at the hut who could only have got there by helicopter as there was no other way in!

This congestion leads to another potential idea.

That of a beat booking system. Another unintended consequence of limited days in region is when two parties of visiting anglers end up on the same water at the same time. Having used their permits they are then in a quandary and a tense situation occurs. We had one of these earlier in the season when we were surprised late one evening in our campsite by a pair of American anglers. They were upset to find that we were ahead of them because 'they had waited all year' to fish this stretch of water. We did agree a plan for the following day, only for it to be broken by them because they just couldn't contain their disappointment. If beats have to be booked in advance there can be no question of anglers ending up on the same water at the same time. Stretches can be rested by Fish and Game, and if mode of transport to river is included you can see who is hiking where, and which helicopter outfit is flying to which river, and how often. In this way you can have a lot of control of managing fishing pressure.

Anyway, hope these thoughts help. Well done on the initiative!!!

Best

Tony Ling



**SOUTHLAND FISH & GAME COUNCIL PAYMENT LIST FOR THE MARCH 2024 MEETING.  
ACCOUNTS PAID SINCE THE LAST MEETING**

**Direct Credits paid:**

22/01/2024	Velocitynet Ltd	\$244.00	internet access
22/01/2024	Paymark	\$21.74	EFTPOS mthly fee
22/01/2024	Farmlands	\$407.26	Purchases - Zane (personal)
25/01/2024	Jacob Smyth	\$48.54	Fuel reimbursement
25/01/2024	Blake Harper	\$217.67	Fuel reimbursement
26/01/2024	Inland Revenue	\$174.39	PAYE adjustment - Jacob Smyth
26/01/2024	Inland Revenue	\$53,456.12	PAYE (incl back pays adjustments)
26/01/2024	Meridian Energy	\$266.85	power 17 Eye street.
26/01/2024	Eyede Solutions Ltd	\$1,177.00	Fish sales
1/02/2024	BNZ	\$0.80	bank fee
2/02/2024	Blake Harper	\$105.90	Fuel reimbursement
3/02/2024	One NZ Group Ltd	\$374.14	Cellphones
9/02/2024	Blake Harper	\$50.00	Fuel reimbursement
9/02/2024	MA & CM Turner	\$266.00	Council meeting travel reimbursement
13/02/2024	Meridian Energy Ltd	\$237.72	Power - 17 Eye Street
13/02/2024	Meridian Energy Ltd	\$101.96	Power - 178 Manapouri Te Anau H/Way
15/02/2024	BNZ	\$13.75	Merchant charges
19/02/2024	Wanaka Helicopters	\$7,917.75	Paradise duck survey
20/02/2024	Cue Environmental	\$1,127.00	SWALP
20/02/2024	University of Otago	\$15,525.00	Women anglers in Aotearoa study
20/02/2024	Paul Garbett	\$931.00	Mental health study
20/02/2024	Aramax Invercargill	\$8.99	Courier charge
20/02/2024	Joss Stroud	\$153.76	Cleaning - 17 Eye Street
20/02/2024	NZ Fish & Game Council	\$230,916.74	Levy
20/02/2024	Inland Revenue	\$19,103.00	PAYE
20/02/2024	Te Anau Signs	\$2,724.13	Angler access sign graphics
20/02/2024	Cue Environmental	\$270.25	Planning Services
20/02/2024	Meehan Solutions Ltd	\$1,488.61	Composite sign panels
20/02/2024	Invercargill CC	\$1,272.00	Rates - 17 Eye street
20/02/2024	Te Anau Signs	\$524.75	Designated Waters graphics
20/02/2024	OfficeMax	\$11.94	Wall planners
20/02/2024	Southland District Council	\$136.41	Rates - Sinclair road.
20/02/2024	Creative Screen Print	\$113.74	T-shirts and cap for ranging (sun protection) Dwight.
20/02/2024	Fuji Xerox	\$76.06	Photocopies
20/02/2024	NZ Fish & Game Council	\$96.60	Seaflex charges
20/02/2024	OfficeMax	\$73.92	Stationery
20/02/2024	Southland District Council	\$120.66	Rates - Mandeville
20/02/2024	Eastern Fish & Game	\$71.00	Xero mthly sub
20/02/2024	Southland District Council	\$228.22	Rates - 178 Manapouri Te Anau H/way
20/02/2024	Cherilio's lunches	\$214.50	Catering - Council meeting Aug 2023.
20/02/2024	OfficeMax	\$21.65	Stationery
26/02/2024	Blake Harper	\$140.00	Overnight allowance
28/02/2024	Ben Febery	\$37.49	Batteries for laser level - reimbursement
8/03/2024	E H Ball ITM	\$13,894.83	Materials for Mononwi Jetty
8/03/2024	Kilwell Sports	\$179.86	rods, reels, lures - wellbeing
14/03/2024	Meridian Energy Ltd	\$264.22	power - Eye Street
14/03/2024	Meridian Energy Ltd	\$93.90	power -Te Anau.
15/03/2024	BNZ	\$36.93	merchant fees
20/03/2024	AMTEC Electrical Ltd	\$48.88	Adjust front door lock timer
20/03/2024	Automotive Solutions	\$257.30	WOF trailer 34FLU + Tail light
20/03/2024	Bridgestone	\$417.48	new tyre
20/03/2024	Dairy Green Ltd	\$1,174.44	Brightwater Stream - water scheme
20/03/2024	Fish & Game Eastern	\$69.40	Xero mthly sub
20/03/2024	Evans freight	\$15.87	freight to Gore - On the fly event
20/03/2024	Fuji Xerox	\$112.14	photocopies
20/03/2024	Inland Revenue	\$18,746.35	PAYE
20/03/2024	T & K Jacques	\$1,050.00	Rent - Blake Harper at Waikaia
20/03/2024	Mararoa Motors	\$188.16	WOF, Master brake cylinder for trailer
20/03/2024	Mararoa Motors	\$50.00	tyre repair
20/03/2024	Mararoa Motors	\$50.00	tyre repair
20/03/2024	NZC	\$96.60	Seaflex charges
20/03/2024	OfficeMax	\$59.35	Stationery
20/03/2024	Paul Garbett	\$532.00	Study monitoring
20/03/2024	power Services Te Anau	\$334.42	Range repair - te Anau house
20/03/2024	Sally Gepp	\$2,445.59	SWLP 8th appeal interim decision

Sub total \$377,068.77

**Plus Direct Debits**

28/11/2023	Eyede Solutions	\$2,544.00	fish sales
4/12/2023	One NZ Group	\$363.61	cellphones
11/12/2023	BP Oil NZ Ltd	\$2,697.72	fuel - fleet
20/12/2023	Velocitynet	\$244.00	Internet access
20/12/2023	Paymark Ltd	\$21.74	EFTPOS mthly charge
28/12/2023	Eyede Solutions	\$749.00	Fish sales
3/01/2024	One NZ Group	\$367.95	Cell phones
10/01/2024	BP Oil NZ Ltd	\$3,126.68	Vehicle fleet
22/01/2024	Velocitynet	\$244.00	Internet access
22/01/2024	Paymark Ltd	\$21.74	EFTPOS mthly fee
12/02/2024	BP Oil Ltd	\$2,990.40	Fuel vehicle fleet
20/02/2024	Velocitynet	\$906.19	Internet access + new UPS unit
20/02/2024	Paymark Ltd	\$21.74	EFTPOS mthly sub
28/02/2024	Eyede Solutions Ltd	\$1,255.00	Fish sales
5/03/2024	One NZ Group	\$362.98	Cellphones
11/03/2024	BP Oil Ltd	\$3,799.40	fuel - Fleet
14/03/2024	Meridian energy Ltd	\$358.12	power
20/03/2024	NZ Post	\$280.00	P O Box annual rental
20/03/2024	Velocitynet	\$442.03	Internet access + add'l RAM for Zane's PC

12/02/2024	BNZ Visa	\$773.26	New World Winton - Batteries Laser level	32.97
			Bettys frankton - Zane/ Cue Environmental	127.47
			NZ Post Collectables - Habitat stamp print	85
			Placemakers - 18v drill Ben	857.39
			Sandfly café - Bill, meeting, Jetboat NZ	16.5
			Pak n Sav - coffee	21.27
			NZTA - rego KTF247	58.48
			Mitre 10 mega - tape,wire,pipe	48.7
			Paperplus - Courier bags	9
			Bombay Palace - Council meeting catering	324.8
			Noel lemming - AA batteries	71.44
			Supercheap Auto - floor mats	42.99
			Clyde Stret dairy - milk	3.79
			Pak n Sav - Council meeting - catering	31.53
			Pak n av - Coffee	210.87
			2Talk ltd - landline prepaid calls	51.75
			Farmers - staff gear allowance Steve	100
			Microsoft office - 365 sub	217.35
			Paperplus - Courier bags	14.5
			freshchoice - milk	2.55
			Paperplus - courier bags	79.5
			ILT Centrepoint - pymnt for spouting cleaning	41.99
			Macpaac - staff gear allowance Steve	43.95
			Pak n Sav - coffee	21.87
			Papaerplus - clipboard storage	34.99

11/03/2024	BNZ Visa	\$3,640.67	Freshchoice - coffee	29.4
			freshchoice - milk	2.55
			pak n Sav - coffee	29.35
			Papaerplus - ink cartridge Te Anau	46.99
			Mitre 10mTe Anau - safety chain for boat trailer	33.34
			Pak n Sav - condolence card - John Whitehead	5.99
			Freshchoice - bait for school fishing day	11.55
			Mitre 10 Te Anau - adhesive for Didymo net	9.48

Te Anau photocentre - Kakapo Swamp scan	10
K Mart - rop - Didymo sampling	14
Pak n Sav - groceries	31.33
2Talk - prepaid landline calls	51.75
Placemakers - Glokote paint spray cans	188.9
Miytre 10 Te Anau - items for Didymo sampling	19.76
Countdown - tea, milk	17.46
Mitre 10 - tap grips for rental house	45.08
NZTA - RUC for PRG681	772.44
Southland Biltong - on the fly event	24
The Coffee Bomb - Zane/Ben	68.1
Microsoft - 365 mthly sub	217.35
The Warehouse - Cohen	3.5
Hunting and Fishing - lure box	13.99
Pak n Sav - coffee	23.54
Freshchoice - milk	2.55
Mountain warehouse - staff gear allowance - Steve	71.99
Garmin - freedom safety plan	25
Noel lemming - replacement cellphone for Cohen	341.89
Cosy Nook - cellphone case	12.24

<b>Grand Total</b>	<b>\$402,279.00</b>
--------------------	---------------------

# FISHING LICENCE SALES PROGRESS

Current season sales Fish 2023/2024			Current season sales Fish 2022/2023			Complete season sales 21/22		
Category	No Sold		Category	No Sold		Category	No Sold	
Whole season adult	2757	\$421,821.00	Whole season adult	2945	\$427,025.00	Whole season adult	3350	\$458,950.00
Whole season Jun	787	\$24,397.00	Whole season Jun	750	\$21,750.00	Whole season Jun	710	\$19,170.00
NR Adult whole season	716	\$189,024.00	NR Adult whole season	667	\$166,750.00	NR Adult	77	\$14,245.00
NR Junior whole season	28	\$1,400.00	NR Junior whole season	29	\$1,363.00	NR Junior	7	\$245.00
NR Child	14	\$700.00	NR Child	13	\$611.00	NR Child	0	\$0.00
NR Day Adult	1163	\$43,031.00	NR Day Adult	824	\$28,840.00	NR Day Adult	95	\$3,325.00
NR Day Junior	23	\$506.00	NR Day Junior	14	\$294.00	NR Day Junior	2	\$42.00
NR Day Child	14	\$308.00	NR Day Child	11	\$231.00	NR Day Child	0	\$0.00
Local Area	273	\$33,306.00	Local Area	302	\$35,032.00	Local Area	288	\$31,680.00
Senior Loyal	562	\$73,060.00	Senior Loyal	571	\$66,236.00	Senior Loyal	582	\$67,512.00
Family	2244	\$444,312.00	Family	2461	\$462,668.00	Family	2545	\$453,010.00
Adult Day	910	\$21,840.00	Adult Day	995	\$22,885.00	Adult Day	1327	\$29,194.00
Junior Day	155	\$775.00	Junior Day	124	\$620.00	Junior Day	121	\$605.00
Short Break	312	\$17,160.00	Short Break	291	\$15,132.00	Short Break	423	\$20,727.00
Long Break	39	\$4,173.00	Long Break	27	\$2,727.00	Long Break	21	\$2,016.00
Winter Adult	0	\$0.00	Winter Adult	0	\$0.00	Winter Adult	107	\$8,774.00
Searun Salmon Card	193	\$965.00	Searun Salmon Card	253	\$1,265.00			
Designated Waters - Res	1777	\$8,885.00						
Designated Waters - NR	524	\$20,960.00						
<b>TOTAL</b>	<b>12491</b>	<b>\$1,306,623.00</b>	<b>TOTAL</b>	<b>10277</b>	<b>\$1,253,429.00</b>	<b>TOTAL</b>	<b>9655</b>	<b>\$1,109,495.00</b>
<b>LEQ'S</b>	<b>8540</b>		<b>LEQ'S</b>	<b>8644</b>		<b>LEQ'S</b>	<b>8099</b>	

LEQ TARGETS FOR FISH 2023/2024 = 9167

LEQ TARGETS FOR FISH 2022/2023 = 8617

FISH LICENCE LEQ'S ARE 93% OF TARGET. LAST YEAR AT SAME TIME 100.3% OF TARGET

--

STHLD FISH LICENCE SALES AS AT 17 MARCH 2024 ARE DOWN 3.7% ON LAST YEARS SALES AT THE SAME TIME.

NATIONALLY THE FISH LIC SALES ARE DOWN 2.2% ON LAST YEARS SALES TO THE SAME TIME



# Profit and Loss

## Fish and Game New Zealand, Southland Region

For the year ended 31 August 2024

	2024	2024 BUDGET 2024	VARIANCE TO BUDGET	% OF BUDGET SPENT
<b>REVENUE</b>				
<b>Fish and Game licence sales</b>				
Fish Sales	1,089,688	1,219,610	129,922	89%
Game licence	17	438,792	438,775	0%
Non-Resident Licence Levy Revenue	198	-	(198)	-
Designated Waters Licence Sales - Southland	16,748	-	(16,748)	-
Water quality & ecosystem monitoring	-	2,000	2,000	-
Information & Prosecutions	-	5,000	5,000	-
<b>Total Fish and Game licence sales</b>	<b>1,106,652</b>	<b>1,665,402</b>	<b>558,750</b>	<b>66%</b>
<b>Interest</b>				
Interest Public Trust	406	-	(406)	-
Interest Other	5,672	42,769	37,097	13%
<b>Total Interest</b>	<b>6,078</b>	<b>42,769</b>	<b>36,691</b>	<b>14%</b>
<b>Other Income</b>				
Contract Income	9,379	-	(9,379)	-
Fiordland compliance & CCD	-	25,000	25,000	-
Diversion Scheme Fishing	8,410	-	(8,410)	-
Fine Income (Courts)	319	-	(319)	-
MLC Fish Pass Management- Meridian	7,865	10,000	2,135	79%
NIWA Monitoring	(24)	-	24	-
Rental - Te Anau Cottage	7,304	-	(7,304)	-
Rent - Office Space Eye St	1,050	1,850	800	57%
Sale of Products	322	-	(322)	-
Eftpos transactions	1,864	-	(1,864)	-
<b>Total Other Income</b>	<b>36,489</b>	<b>36,850</b>	<b>361</b>	<b>99%</b>
<b>Total REVENUE</b>	<b>1,149,219</b>	<b>1,745,021</b>	<b>595,802</b>	<b>66%</b>
<b>EXPENSES</b>				
<b>Outputs</b>				
<b>Species management</b>				
Population monitoring	18	20,550	20,532	0%
Harvest assessment	-	2,000	2,000	-
Releases	54	150	96	36%
<b>Total Species management</b>	<b>73</b>	<b>22,700</b>	<b>22,627</b>	<b>0%</b>
<b>Habitat protection &amp; management</b>				
RMA Consents evaluation	-	50	50	-
RMA Plans & Policy	-	50	50	-
ES Water & Land Plan Appeal	2,729	-	(2,729)	-
Works & management	-	2,100	2,100	-
Assisted habitat	1,927	110	(1,817)	1,752%

	2024	2024 BUDGET 2024	VARIANCE TO BUDGET	% OF BUDGET SPENT
Assessing & monitoring	12	-	(12)	-
<b>Total Habitat protection &amp; management</b>	<b>4,668</b>	<b>2,310</b>	<b>(2,358)</b>	<b>202%</b>
<b>Angler &amp; Hunter participation</b>				
Access	12,811	58,500	45,689	22%
Other Publications	-	5,400	5,400	-
Pressure sensitive fisheries	14,513	400	(14,113)	3,628%
Training & R3	1,694	1,500	(194)	113%
<b>Total Angler &amp; Hunter participation</b>	<b>29,018</b>	<b>65,800</b>	<b>36,782</b>	<b>44%</b>
<b>Public interface</b>				
Communication	2,303	1,200	(1,103)	192%
Public promotions	-	130	130	-
Visitor facilities	291	300	9	97%
Fish in schools programme	39	605	566	6%
<b>Total Public interface</b>	<b>2,633</b>	<b>2,235</b>	<b>(398)</b>	<b>118%</b>
<b>Compliance</b>				
Ranging	722	1,250	528	58%
Ranger training	-	3,600	3,600	-
Compliance	3,964	4,700	736	84%
<b>Total Compliance</b>	<b>4,686</b>	<b>9,550</b>	<b>4,864</b>	<b>49%</b>
<b>Licensing</b>				
Commission	41,546	95,607	54,061	43%
<b>Total Licensing</b>	<b>41,546</b>	<b>95,607</b>	<b>54,061</b>	<b>43%</b>
<b>Council</b>				
Council meetings	2,682	9,500	6,818	28%
<b>Total Council</b>	<b>2,682</b>	<b>9,500</b>	<b>6,818</b>	<b>28%</b>
<b>Planning &amp; reporting</b>				
Mngt Plan	-	1,000	1,000	-
Reporting	9,245	12,000	2,755	77%
National Liaison	278	1,500	1,222	19%
<b>Total Planning &amp; reporting</b>	<b>9,523</b>	<b>14,500</b>	<b>4,977</b>	<b>66%</b>
<b>Total Outputs</b>	<b>94,829</b>	<b>222,202</b>	<b>127,373</b>	<b>43%</b>
<b>Overheads</b>				
<b>Employee related costs</b>				
Salaries and wages	369,577	738,350	368,773	50%
Fringe Benefit Tax	-	5,000	5,000	-
ACC Levy	-	1,300	1,300	-
Staff training & other expenses	3,007	9,600	6,593	31%
KiwiSaver contributions	13,050	-	(13,050)	-
<b>Total Employee related costs</b>	<b>385,634</b>	<b>754,250</b>	<b>368,616</b>	<b>51%</b>
<b>Other expenses</b>				
Communications & Consumables	7,126	14,400	7,274	49%

Profit and Loss

	2024	2024 BUDGET 2024	VARIANCE TO BUDGET	% OF BUDGET SPENT
Field equipment	947	4,500	3,553	21%
General	3,752	29,606	25,854	13%
Office equipment	2,686	9,000	6,314	30%
Office premises	14,174	19,700	5,526	72%
Vehicles	18,984	35,234	16,250	54%
<b>Total Other expenses</b>	<b>47,669</b>	<b>112,440</b>	<b>64,771</b>	<b>42%</b>
<b>Total Overheads</b>	<b>433,303</b>	<b>866,690</b>	<b>433,387</b>	<b>50%</b>
Depreciation	-	15,164	15,164	-
<b>Total EXPENSES</b>	<b>528,132</b>	<b>1,104,056</b>	<b>575,924</b>	<b>48%</b>
<b>Operating Surplus/(Deficit)</b>	<b>621,087</b>	<b>640,965</b>	<b>19,878</b>	<b>97%</b>
<b>Less other Expenses</b>				
NZ Fish & Game Levy	(401,594)	(803,189)	(401,595)	50%
<b>Total Less other Expenses</b>	<b>(401,594)</b>	<b>(803,189)</b>	<b>(401,595)</b>	<b>50%</b>
<b>NET SURPLUS/(DEFICT)</b>	<b>219,492</b>	<b>(162,224)</b>	<b>(381,716)</b>	<b>-135%</b>



**Date:** 7 March 2024

**To:** Wilma Falconer – Chief Executive Officer  
Environment Southland

**By email:** wilma.falconer@es.govt.nz

Dear Wilma

**Alleged illegal works – Waimea Stream, Southland**

The purpose of this letter is to bring to your attention destructive and potentially illegal works recently undertaken in the Waimea Stream.

**Background**

The Waimea Stream is a natural inland stream in the Southland Region that drains the Lintley ranges before travelling several kilometres across the Waimea plains and discharging into the Maitai River near Mandeville.

The Waimea Stream has international recognition among anglers for its brown trout fishery. It is also recognised by the Water Conservation (Maitai River) Order 1997 for its nationally outstanding brown trout fishery and angling opportunities. This order is the highest form of protection for a water body, ensuring that its natural beauty and value for brown trout fish, angling activities, and future generations are preserved.

**Waterway clearance works**

In late February 2024, Fish and Game was contacted by a resident trout angler, who raised concerns about the destructive nature and extent of waterway clearance works undertaken in the Waimea Stream. In response, a Fish and Game Officer attended on site to view the works and capture ground based aerial and aerial (drone) photographs of them.

Fish & Game appreciate that some willow control and removal works were necessary and appropriate. However, the nature and extent of works undertaken far exceeds the selective and considered removal of problematic willows that was anticipated.

Attached is a series of location specific photographs comparing Google Earth images taken before the waterway clearance work and ground based and drone photographs taken after the work. These photographs show:

1. Selective removal of riparian willow trees has occurred at several locations along the Waimea Stream (Which Fish & Game is not opposed to).





2. Removal of instream gravel, which has been deposited in built-up mounds on the adjacent banks where it is unavailable for downstream mobilisation.
3. Destruction of habitat, including the scrapping / pulling of instream gravel onto the adjacent riparian margins.
4. Loss of instream habitat, particularly deep pool and run habitat which is favoured by brown trout and longfin eel. This has been replaced with long, shallow, homogenous runs (with poor habitat value).

The work is particularly destructive because much of the habitat value of the Waimea Stream is dependent on the ecosystem that is supported by the gravel substrate through the runs and riffles. Because the Waimea Stream does not have actively eroding headwaters, or significant lateral channel migration, there is no source of gravel to replenish that that has been removed. Therefore, the damage caused will be perpetual, unless there are steps taken to replenish the lost gravel and restore the habitat.

I have spoken to a staff member from your catchment division, who, having viewed the imagery, was at a loss to explain some of the work that had been undertaken. The suggestion was made that some of the work may have been undertaken by an adjoining landowner or owners.

Irrespective of who conducted the work, it is our preliminary view that it cannot be justified within any of the Permitted Activity Rules of the Proposed Southland Water and Land Plan. For the avoidance of doubt, the material removed or redistributed is instream gravel and it is **not** aquatic plants or fine sediment comprised of mud, silt, or sand.

Fish & Game requests:

1. Urgent investigation of the works by the Compliance Division at Environment Southland to determine who is responsible and when the work occurred.
2. Confirmation of what, if any, aspects of the works have been undertaken in the Waimea Stream by the Catchment Management Division at Environment Southland. If so, please provide confirmation of:
  1. What works have been undertaken and when, including the locations; and
  2. Confirmation of what authorisation(s), if any, has been provided for the works, including copies of any operative resource consents or identification of any relevant permitted activity rule in the Proposed Southland Water and Land Plan.
  3. If considered a permitted activity, please provide copies of any analysis undertaken to determine compliance with the relevant permitted activity rule.



4. Environment Southland freshwater ecological staff engage with relevant affected parties, including the Mana Whenua, Department of Conservation and Fish & Game, to develop a programme to restore the lost habitat and remediate the adverse effects of the works.

Fish & Game urge prompt action by Environment Southland to investigate and address these extremely concerning activities. We look forward to your findings, and subsequently, working with your team on development of a rehabilitation plan for the mauri of the Waimea Stream.

Yours sincerely

A handwritten signature in dark ink, appearing to read "Zane Moss".

Zane Moss  
Manager  
Fish & Game – Southland Region

Waimea Stream Mouth – BEFORE

---



Waimea Stream Mouth - AFTER

---





End of Hatfield Road – BEFORE



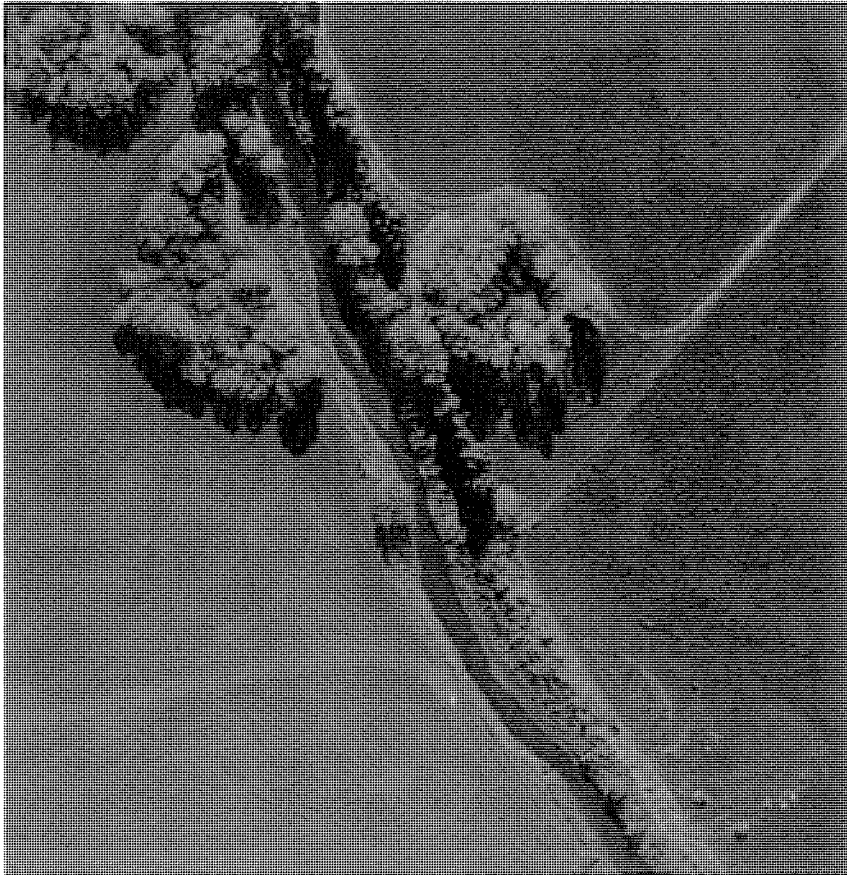
End of Hatfield Road – AFTER

---



~250m upstream of Pahiwi Bridge – BEFORE

[Note: Location of sole willow on true right bank for location comparison]





~250m upstream of Pahiwi Bridge – AFTER PICTURE 1

[Note: Location of single willow on true right bank for location comparison]



~250m upstream of Pahiwi Bridge – AFTER PICTURE 2

[Note: Location of single willow on true right bank for location comparison]





~850m upstream of Pahiwi Bridge – BEFORE

[Note: Location of inflowing drain true left bank for location comparison]



~850m upstream of Pahiwi Bridge – AFTER

[Note: Location of inflowing drain true left bank for location comparison]



~1.4km upstream of Pahiwi Bridge – BEFORE

[Note: Bend in the river for location comparison]





~1.4km upstream of Pahiwi Bridge – AFTER PICTURE 1

[Note: Bend in the river for location comparison]



~1.4km upstream of Pahiwi Bridge – AFTER PICTURE 2

[Note: Bend in the river for location comparison]





Glenure Bridge - BEFORE

---



Glenure Bridge – AFTER Looking Upstream

[Note: Drain entering from true left]





Glenure Bridge – AFTER Looking Downstream

---

