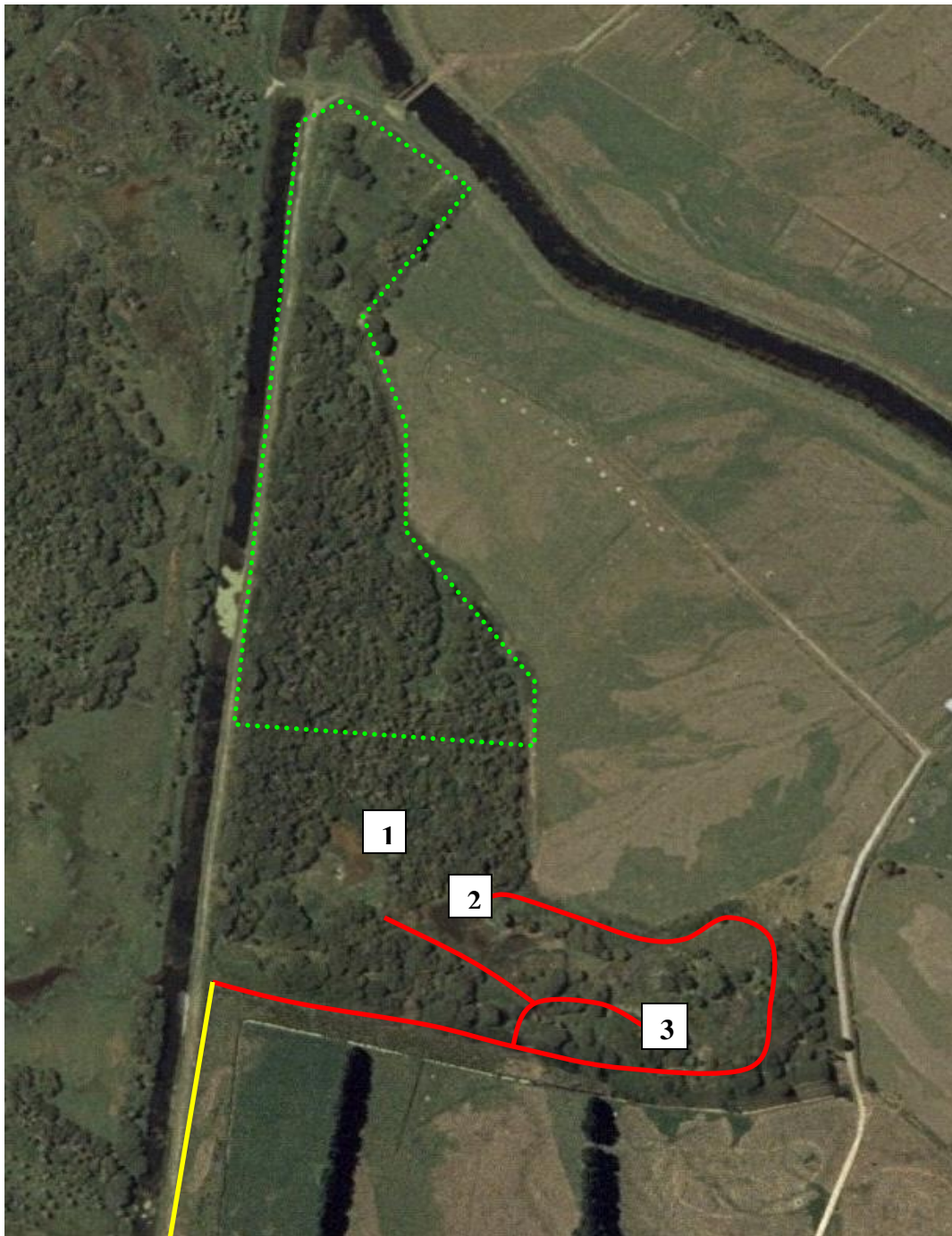






**BREGMANS WMR** – situated at the end of Sutherland Road, off Matata Road (SH2). Go through the gate directly as road finishes and drive along stopbank until reaching reserve. Access to the ponds is immediately right along an access track upon reaching the reserve boundary (identified by a sign). Do not park along access track as multiple users (eg. drainage engineers). Note F&G only manage the bottom third of the reserve and the ponds are only in this area. Access to the upper two thirds is prohibited.



-  Vehicle Access Off Sutherland Road (adjacent to 109 Canal)
-  Internal Reserve Access Tracks
-  DoC Administered Area = No Hunter Access
-  Stand / Maimai Number